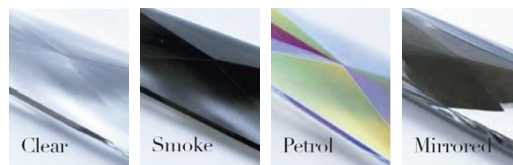




Crystal Colours



Chain Colours

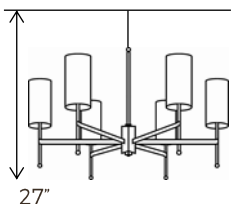
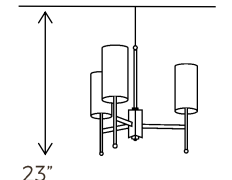


Metalwork Finishes



STEM CHANDELIER WITH CHAIN OR CRYSTAL

Model Number — TL-UL-STCH; TL-UL-SMSTCH

Diameter	Height excl. suspension	Suspension Chains	Lamp Holders	Max Wattage	Weight	Ceiling Rose	Standard minimum hanging height
6-arm Chandelier - TL-UL-STCH							
37 1/2"	24 1/2"	39 1/2"	6	20W each	29lb	2 3/4"	
3-arm Chandelier - TL-UL-SMSTCH							
23 3/4"	20 1/2"	39 1/2"	3	20W each	25lb	2 3/4"	



General:

Height measurements for chandeliers do not include the suspension chains. Suspension chains for chandeliers can be adjusted to the height needed upon installation.

All of our lamp holders are standard large Edison Screw (E26).

Made to USA standards and designed to operate at 120V / 60Hz.

All measurements and weights are approximate - our lights are hand crafted so there will be some variation.

Please note, light sources are not supplied with UL Listed orders.

We recommend using only candle or golf ball style light sources in this chandelier.

Assembly:

We recommend that you use a qualified electrician to install your light.

Our lights come with comprehensive installation instructions. They shouldn't need much maintenance, but we give you some information on that too.

Made in England.

All of our lights are designed and manufactured in England by skilled craftsmen and women.

All designs are copyright to Tigermoth Lighting Ltd.

Modifications available:

- Additional length of suspension chain
- Reduced 520mm hanging height for 6-arm

Call us for more information on modifications.

Tigermoth Lighting is a Lighting Industry Association Quality Assured Company.



A range of Tigermoth Lighting products are UL approved under the UL General Coverage Scheme.



UL File No. E499008